

# Forest wall Hanging

Designed by Lynne Goldsworthy of [lilysquilts.blogspot.com](http://lilysquilts.blogspot.com)  
38" x 56" (1m x 1.4m)



# Forest wall Hanging

Designed by Lynne Goldsworthy of [lilysquilts.blogspot.com](http://lilysquilts.blogspot.com)  
38" x 56" (1m x 1.4m)

Used For	Twelve Days	Amount
Piano Border	2165 T 2169 T 2170 T 2171 Q 2172 G 2174 N 2174 Y	One F8th of each
Corner Frames	2171 G	One FQ
Corner Frame centres	2168 Q	One FQ
Panel	2173/1	One panel
Background (BKG)	2000/W02	60cm/24"
Binding	2171 G	40cm/15"
Backing	2168 G	1.75 m / 1 ¾ yds
Wadding - 44" x 62" (1.1m x 1.6m) 279 Cotton Mix 80-20 from <a href="http://www.vlieseline.com/en">http://www.vlieseline.com/en</a>		
Threads - Aurifil 50wt for piecing and 40wt for quilting from <a href="http://www.aurifil.com">http://www.aurifil.com</a>		
Templates - One circle block template		
Fusible Web 18" / 45cm wide - ½ yd / ½ m Bondaweb from <a href="http://www.vlieseline.com/en">http://www.vlieseline.com/en</a>		

## Notes:

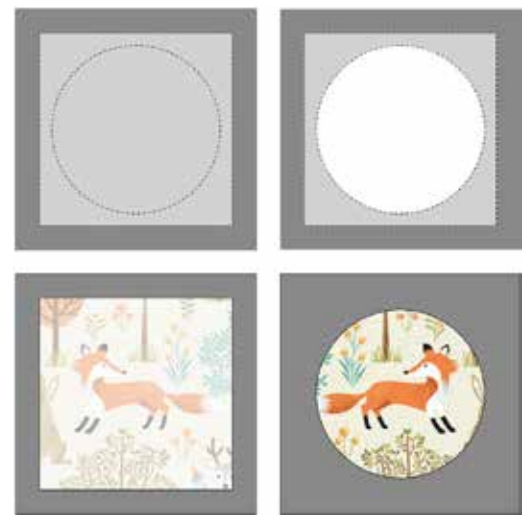
- **Make sure to visit <http://www.makoweruk.com/projects/> to ensure you are working from the most up-to-date version of the pattern**
- Read the pattern in full before starting
- ¼" seams are used throughout except where stated otherwise
- Press after each seam, pressing seams open or to one side as preferred
- WOF - width of fabric - a strip of fabric cut from selvedge to selvedge
- WOFQ – a strip of fabric cut from selvedge to centre cut on a FQ or F8th

## Cutting the fabrics

1. Follow the main quilt image for how many 2" x 5" piano pieces are cut from each fabric:
  - For 4 pieces, cut one 2" WOFQ and cut into four 5" lengths.
  - For 8 pieces, cut two 2" WOFQ strips and cut into four 5" lengths per strip.
  - For 12 pieces, cut three 2" WOFQ strips and cut into four 5" lengths per strip.
  - For 16 pieces cut four 2" WOFQ strips and cut into four 5" lengths per strip.
2. Cut the corner frame fabric into eight 5" squares. NB: leave the corner frame centre fabric whole for now and fussy cut at step 5 below.
3. Trim the panel to ½" away from the edge of the printed boxes all round.
4. Cut the BKG fabric into:
  - two 2" WOF strips and trim to 39 ½" long (side BKG strips)
  - two 2 ¾" WOF strips and trim to 26" long (top and bottom BKG strips)
  - five 2" WOF strips, sew end to end and trim to two 38" and two 53" lengths
5. Leave the backing whole and cut the binding fabric into five 2 ½" WOF strips.

## Making the wall hanging

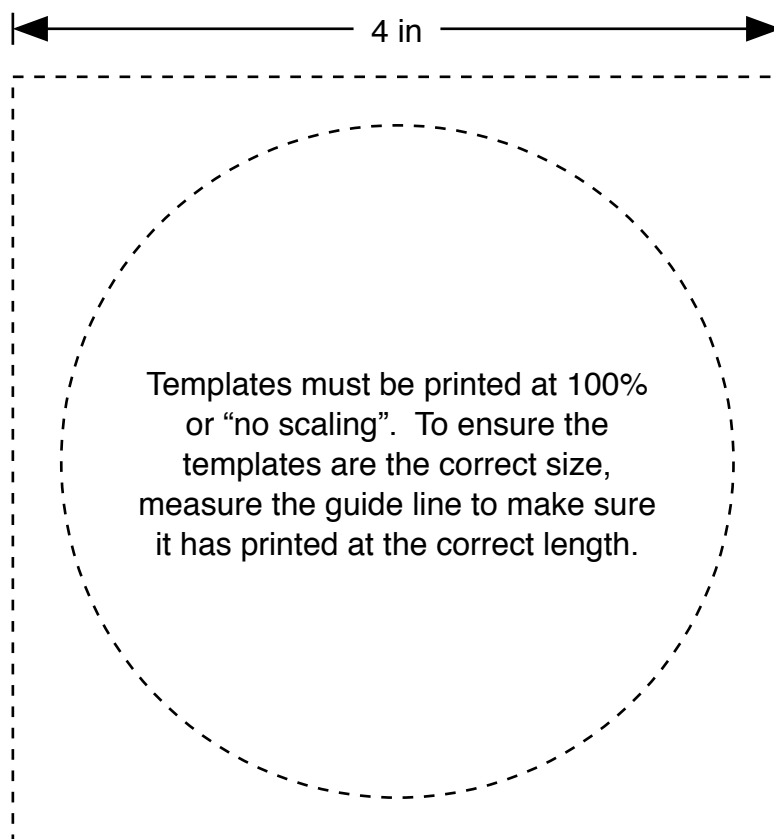
1. Sash the sides of the panel with the side BKG fabric strips then the top and bottom with the top and bottom BKG fabric strips.
2. Trace the circle template onto eight squares of bondaweb and cut out around the outside square line. Fuse to the back of the corner frame 5" squares, centering so that there is a ½" gap all round (fig 1). Cut out the centre circle (fig 2).
3. Fussy cut 4" squares from the corner frame centres fabric so that the chosen motifs sit in the centre of each square. Fuse these squares to the back of the corner frame 5" squares, again centering to leave a ½" gap all round (figs 3 (back) and 4 (front)).
4. Sew the piano border pieces and the corner frame pieces into:
  - two side strips, each containing one corner frame piece and twenty-six piano border pieces; and
  - one top and one bottom strip, each containing three corner frame pieces and fourteen piano border pieces.
5. Sew the side strips to the side then the top and bottom strips to the top and bottom of the centre section.
6. Sash the sides with the 2" x 53" then the top and bottom with the 2" x 38" BKG fabric strips.



figs 1-4

## Finishing the wall hanging

1. Sew the binding strips end to end using diagonal or straight seams as preferred and press wrong sides together along the length to make a double fold binding.
2. Make a quilt sandwich, basting together the back, the wadding and the top.
3. Quilt as desired then trim square, removing excess wadding and backing. We quilted a diagonal cross hatch of lines 1" apart using a cream 40wt Aurifil thread on the front and back.
4. Bind, taking care to mitre the corners.







2168/Q Forest Scene



2168/G Forest Scene



2169/Q Trees



2171/Q Leaf Ditzy



2171/G Leaf Ditzy



2169/T Trees



2170/G Animal Scatter



2170/S Animal Scatter



2170/Q Animal Scatter



2170/T Animal Scatter



2172/Y Foxes



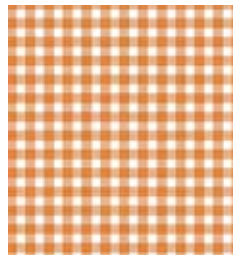
2172/G Foxes



2165/N Storm



2174/N Ditzy



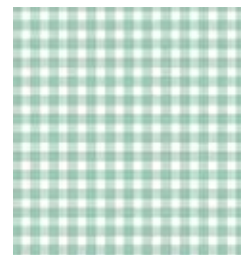
920\N64 Gingham



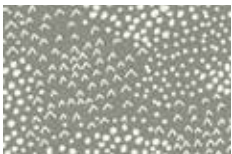
2165/T Storm



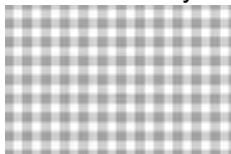
2174/T Ditzy



920\T62 Gingham



2165/S Storm



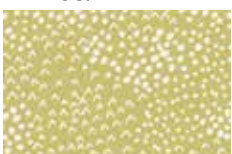
920\S65 Gingham



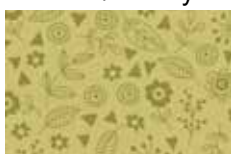
2165/Y2 Storm



2174/Y Ditzy



2165/G Storm



2174/G Ditzy



2173/1 Panel Each panel 60 x 112cms (24" x 44")